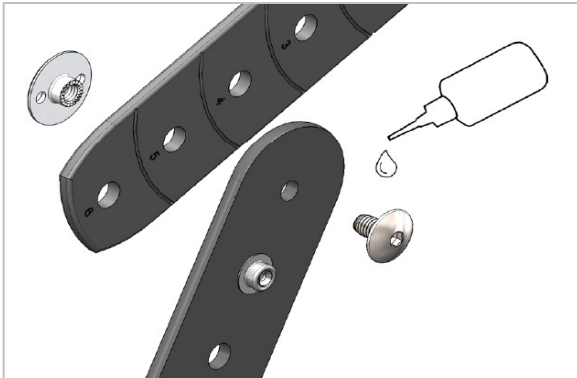


**Rotate Evoflex and Belt Extender Around an Obstacle**

*When to use:* to rotate the Evoflex out of the way when an obstacle blocks the Belt Extender from rotating.

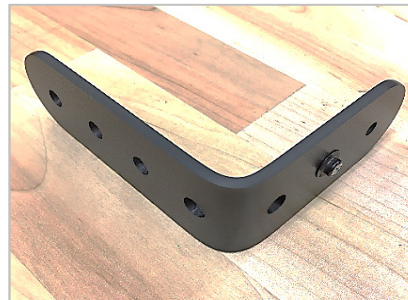
1. Place 1-2 drops of threadlocker (e.g., Loctite) on the truss head screw.
2. Install Belt Extender with locking pin facing away from Evoflex.
3. Mount to the chair—the Belt Extender may be blocked, but the Evoflex can rotate out of the way.



**Bend Belt Extender with Heat**

*When to use:* to mount Belt Extender under solid seat bases or around back supports.

1. Measure and mark bend line. Ideal bend line is between two mounting holes. Be sure to mark the correct side, considering whether the locking pin will be used or not.
2. Apply heat directly to bend line using a heat gun at 120-150°C (250-300°F), or immerse in boiling water for 30 seconds.
3. Bend over a form, such as a wood block, to control bend location and angle.
4. Belt Extender can be reheated and rebent as needed, as long as the maximum temperature of 150°C (300°F) is not exceeded.



**Cut Belt Extender with Saw**

*When to use:* to shorten Belt Extender.

1. Measure and mark cut line. Ideal cut line is between two mounting holes.
2. Secure Belt Extender in a vise with flat side up.
3. Cut to length using hacksaw. Belt Extender can also be cut with bandsaw.
4. File or sand rough edges to smooth.

